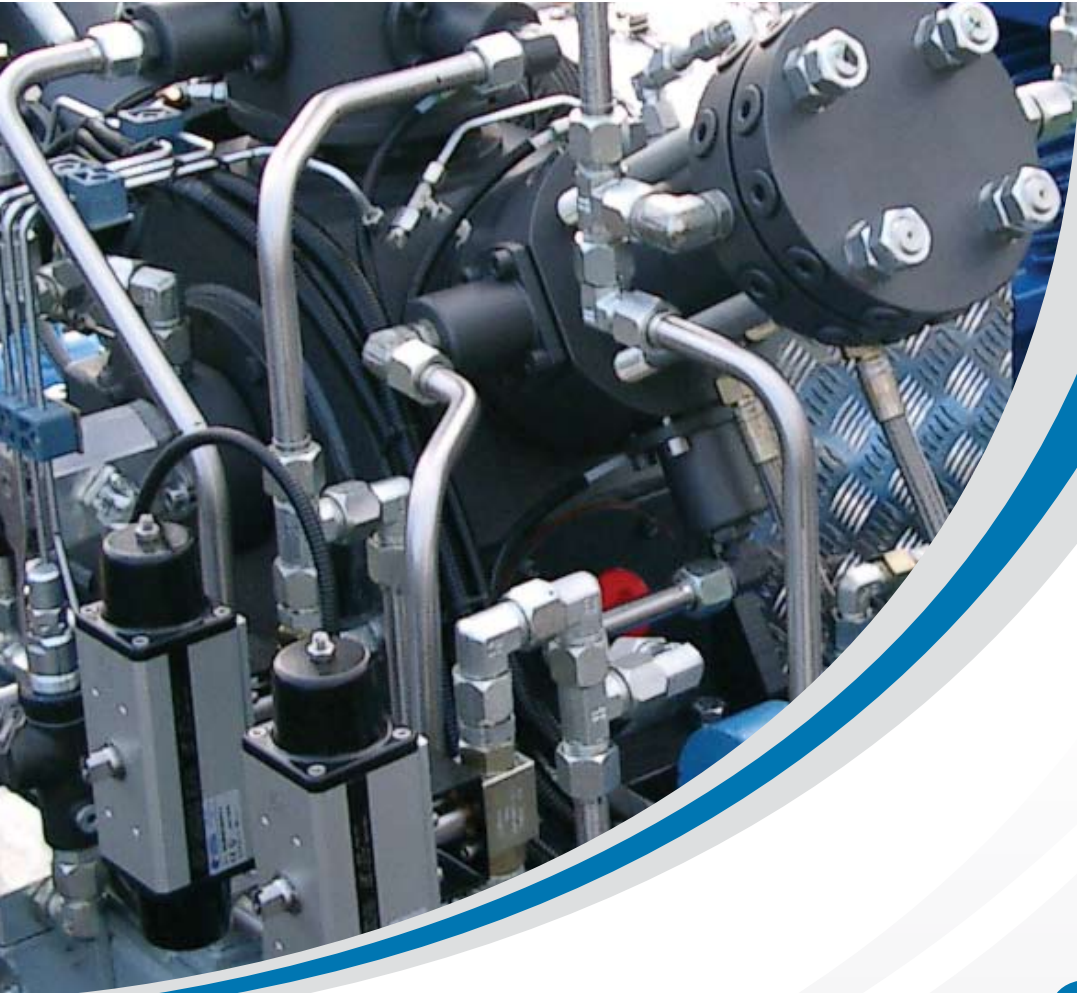


THE NEW GENERATION COMPRESSOR

SA200





SA200

THE NEW GENERATION COMPRESSOR



SA200 inside the GASVECTOR system



SA200

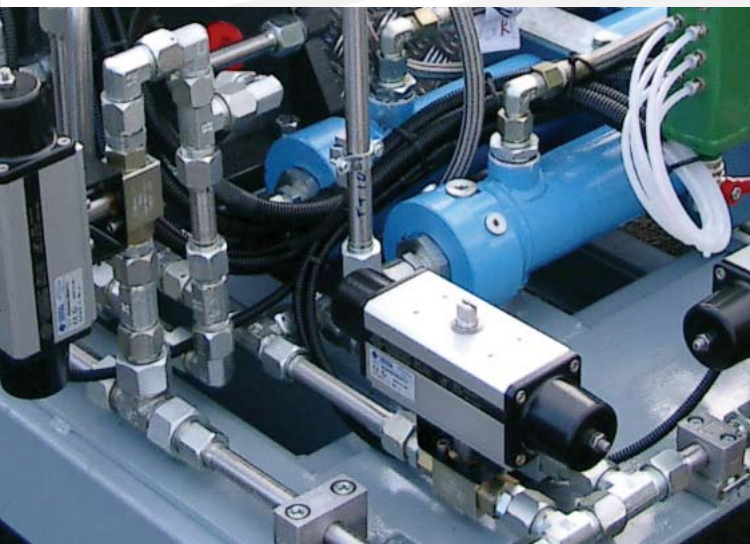
Designed to be installed either inside GASVECTOR modules or in service rooms, it can work in conjunction with an electric motor up to maximum 55 kW power with flow rates exceeding 900 Sm³/h.

The intrinsic flexibility of the engineering of the **SA200** makes it ideal for applications such as roadside filling stations, stations for fleets of public transport vehicles, or processing plants including those with gas produced by biomass.

Extremely compact and versatile, it adapts to any suction pressure.

Easy to maintain, with the guarantee of low oil consumption, low starting current and low compression costs.

Each unit only leaves the factory after being tested under normal operating conditions.



Main specifications

- High performance
- Lowest compression costs on the market
- Low starting current
- No vibration
- NON lubricated cylinders
- Low oil consumption
- Fully automatic operation
- Discharge pressure up to 350 bar
- Minimum maintenance costs
- Designed for a wide range of suction pressures
- Perfectly balanced
- Low noise levels
- Interchangeable piston-sleeve module
- Suitable for any type of application: CNG, Biogas and Process gas
- Engineered for non stop operation, 365 days a year
- Automatic system to shut off the gas input/output

Standard version

- Inbuilt remote control of the system
- Alarm management via SMS/e-mail
- 12" colour touch screen
- Computerised dispensing control system
- 1 µm (micron) filtration on input
- Automatic system to shut off the gas input/output
- Electro pneumatic priority panel
- Interstage pressure transmitters
- Start up with valve lifter and blow down
- Tropicalised gas-water-air cooling
- Efficiency sensor for the crank mechanism oil filter

Options Available

- Coalescent type filter
- Oil Free
- API 618 compliant
- Explosion Proof electric control panel
- Start up with blow down
- Start up with inverter and computerised control of consumption
- Computerised flow rate control system
- Soft-Start
- Operation with endothermic motor
- Tropicalised gas-air cooling
- Pipes protected against high temperatures
- Interstage temperature transmitters
- Vibration transmitters
- Booster configuration available for draining of cylinder skirts

New adjustment system
for the direct motor-compressor
coupling

Wide range of piston-sleeve
modules available

Start up with valve lifter
or blow down available

Lowest oil consumption
on the market

2 or 3 cylinder
configuration

The lowest amount of oil
in compressed gas

Priority panel
on board the skid

Innovative pistons and seals
compared to industry standards

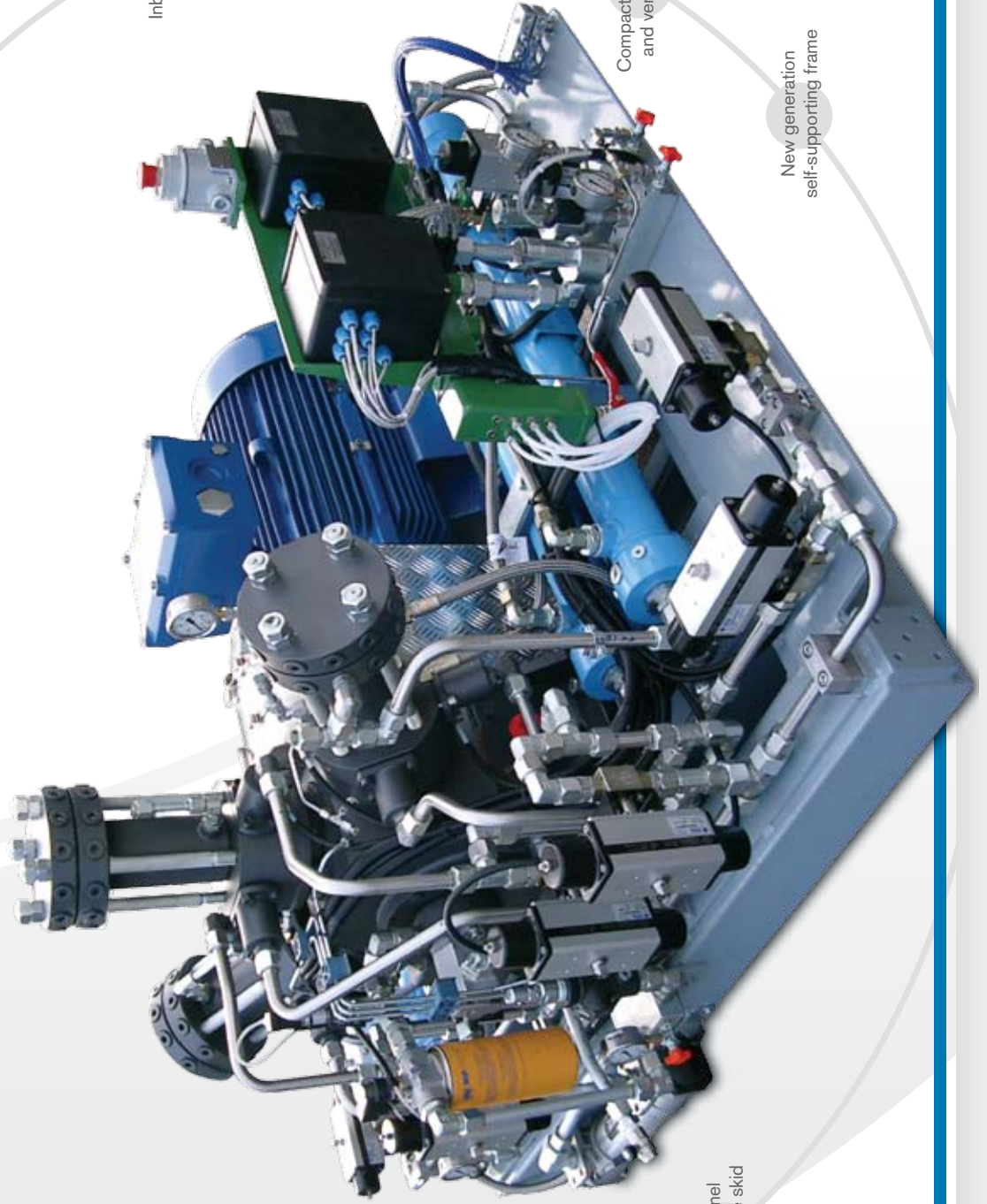
Electric control panel
with large 12" colour
touch screen display

Inbuilt remote control
of the system

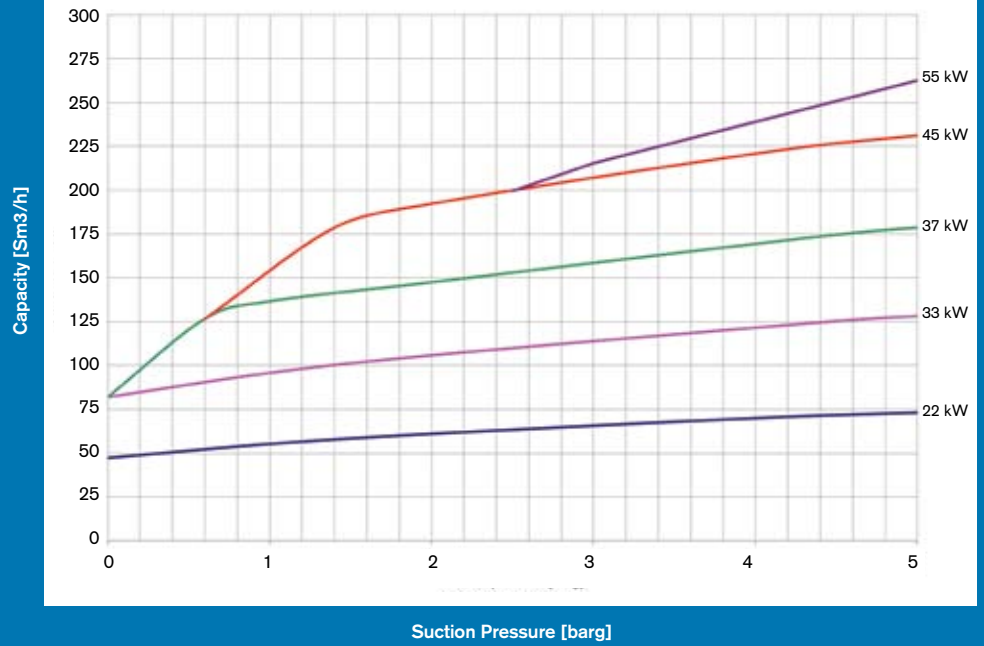
Alarm management
via SMS/e-mail

Compact safety panel
and vent recovery

New generation
self-supporting frame



SA200 flow rate diagram

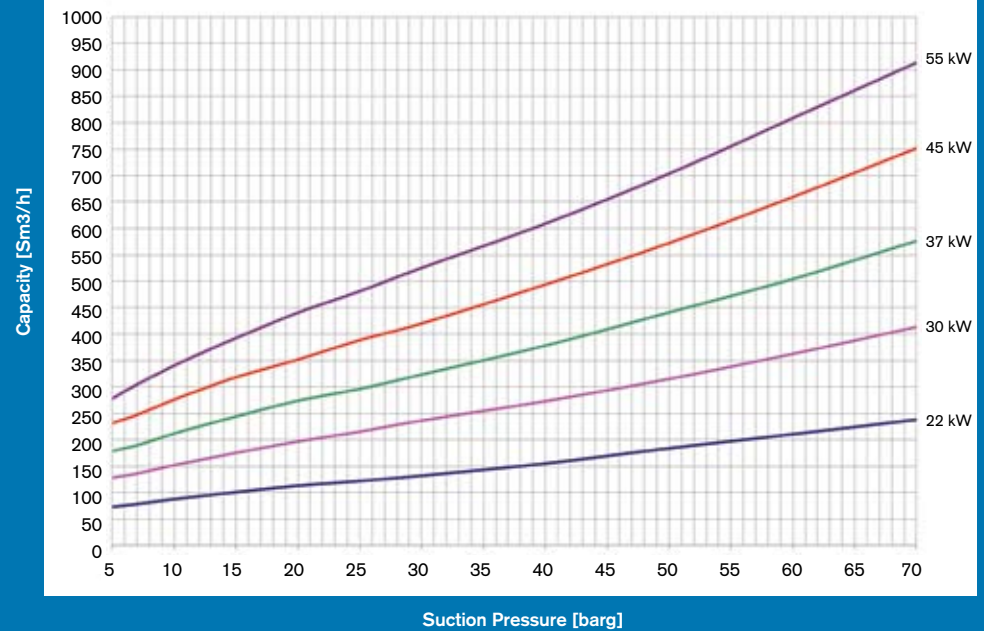


Diagrams provide an indication of the performance range. Performance refers to a input gas temperature of 15°C and discharge pressure at 250 barg. Please contact the technical service department at Fornovo Gas to control the selected configuration or to check if products with other pressures/flow rates not shown in the charts are in stock.

SA200

www.fornovogas.it

SA200 flow rate diagram



Fornovo Gas S.r.l.
 Registered Office
 Via P.M. Curie, 14
 42122 - Reggio Emilia - Italy

Head Office
 Via Carbognani, 5
 43029 - Traversetolo (PR) - Italy

Tel. +39.0521.842506
 Fax +39.0522.550112
 info@fornovogas.it